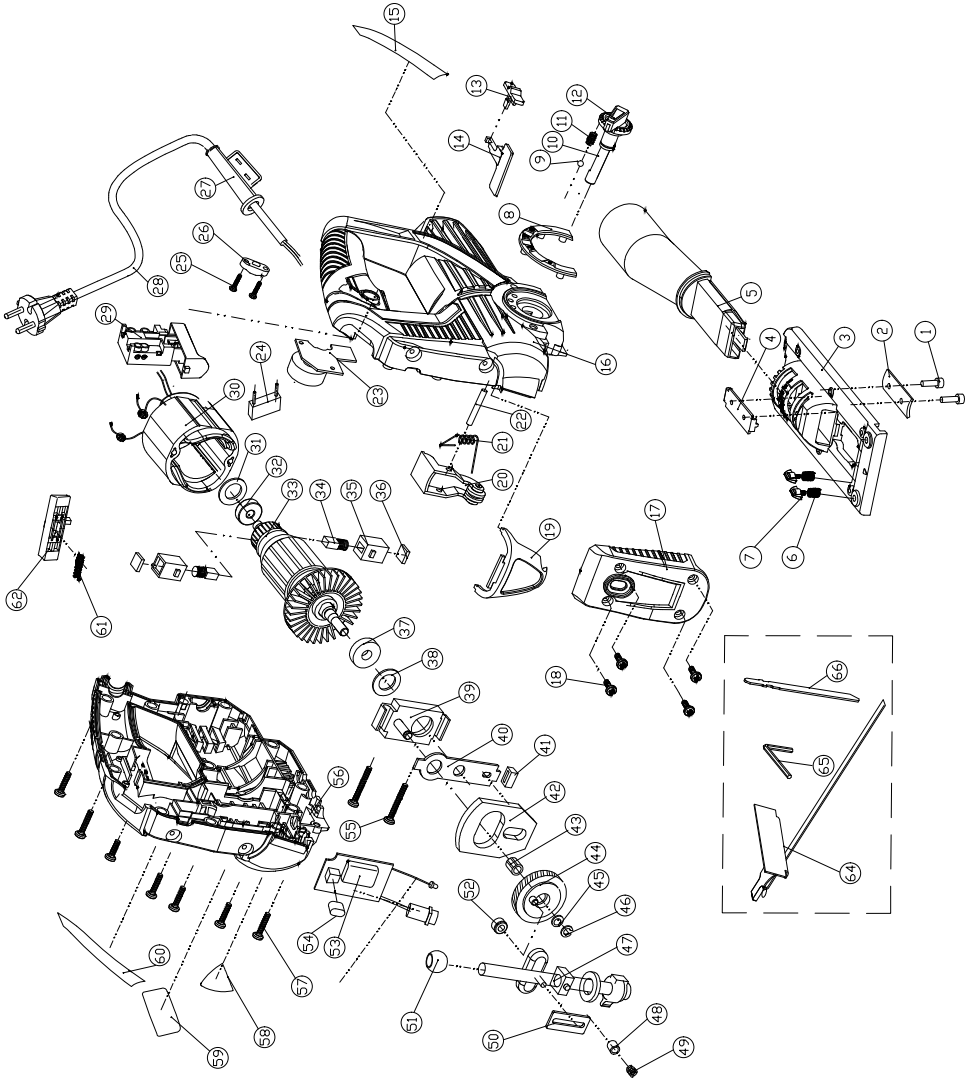


**EXPLODED VIEW OF RDP-JS35**



<b>№</b>	<b>PARTS NAME</b>
1	Hexagon socket head cap screw M4 * 16
2	Base plate fixing piece
3	Aluminum base plate assembly
4	Base plate spacer
5	Vacuum tube
6	Pagoda spring
7	Small knob of base plate
8	Decorative ring
9	φ 4 Steel ball
10	Cutter lift eccentric pin
11	Knob spring
12	Tool lifting knob
13	Dust blowing and suction push knob
14	Blowing and vacuum baffle
15	Nameplate label
16	Left housing
17	Decorative cover
18	Cross pan head screw ST3 * 12
19	Transparent protective cover
20	GUIDE FRAME ASSEMBLY
21	Tool lifting torsion spring
22	φ 4 * 28 locating pin
23	governor
24	Two pin capacitance 0.22uf
25	Cross pan head screw ST4 * 12
26	Line pressing plate
27	Cable sheath
28	Cable double round plug
29	switch
30	stator
31	607 leather ring
32	607 Bearing
33	rotor
34	Electric brush 5 * 9 * 12
35	Brush box 19 * 13 * 13
36	Brush box cover
37	608 Bearing
38	Wool loop
39	BRACKET AS-CENTER
40	Knife lift top plate
41	Square wool pad 11 * 22 * 2
42	Balance weight
43	Needle bearing HK6 * 9 * 11
44	big gear wheel
45	shim φ 12*6*1.5
46	φ 6 Hoist card
47	Reciprocating rod assembly
48	Spring seat
49	Cutter bar return spring
50	Return block
51	Spherical support
52	Small pulley
53	LED laser circuit board
54	Laser button
55	Cross pan head B screw ST4 * 30
56	Right housing
57	Cross pan head B screw ST4 * 14
58	Laser warning label
59	Laser warning label
60	Parameter label
61	Switch knob return spring
62	Switch knob
63	Guide ruler
64	inner hexagon spanner
65	Saw blade